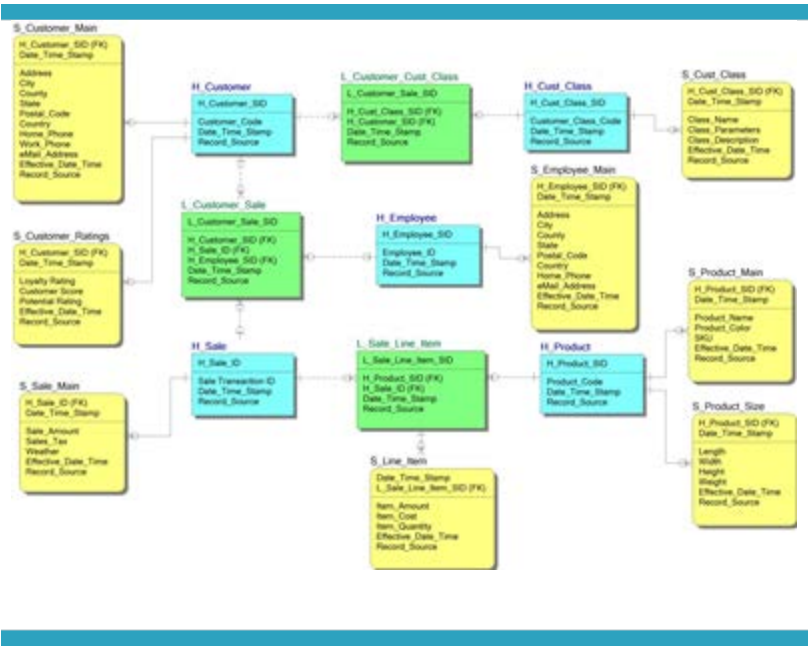


DATA VAULT CDVDM

Certified Data Vault Data Modeler Course



DATA VAULT CDVDM

Certified Data Vault Data Modeler Course

Forward

Thank you for your interest in the Data Vault certification course. Your successful completion of this course will result in a designation of Certified Data Vault Data Modeler – CDVDM.

Data Vault modeling is rapidly becoming the standard modeling approach for the data warehouse. Over 1200 major international organizations are applying data vault modeling techniques today.

The data vault principles are specifically well suited for data integration and historization. When applied to data warehousing programs data vault modeling can provide the organization with some very compelling benefits. These include agility, auditability, adaptability, alignment with the business, and support for operational data warehousing initiatives.

To gain these benefits the organization will need to commit to both EDW program level factors as well as specific data vault modeling patterns, standards and methods. This course will guide you through these modeling patterns, rules and methods to prepare you for successful data vault modeling in your organization.

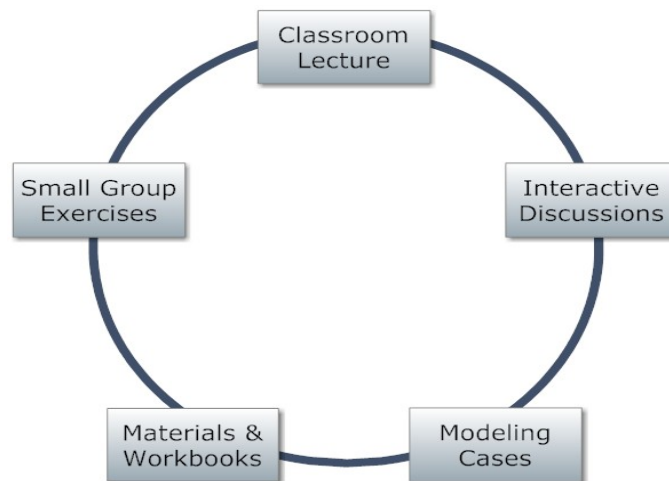
We look forward to seeing you in the classroom.

The CDVDM Course

Welcome to the Certified Data Vault Data Modeler - CDVDM seminar! This course will guide you through the Data Vault modeling approach from modeling constructs and patterns to applying data vault principles in your DWBI program. This course covers also loading paradigms, architectures, and how to develop an effective overall data vault data warehouse program. Since data vault may be new for many of you, this course also includes a summary of the benefits of using data vault techniques.

CDVDM Course Structure

The CDVDM course is a three (3) day intensive classroom based course. The course consists of five core components plus the certification exam. The classroom time is 40% Classroom Lecture, 30% Small Group Exercises and 30% Interactive Discussions.



The course materials consist of a published course book that follows the classroom lectures and several modeling cases for the small group modeling labs. Class interactive discussions are based on these cases plus workbook examples.

Target Audience

The target audience for this course includes data warehousing and business intelligence professionals, data modelers, data architects, model managers, data warehouse DBAs, data scientists, and ETL professionals. Because data vault modeling concepts are closely aligned with the business aspects of DWBI programs our target audience also includes program managers, business analysts, information modelers, information architects, and other BICC professionals.

Course Outline

Day One

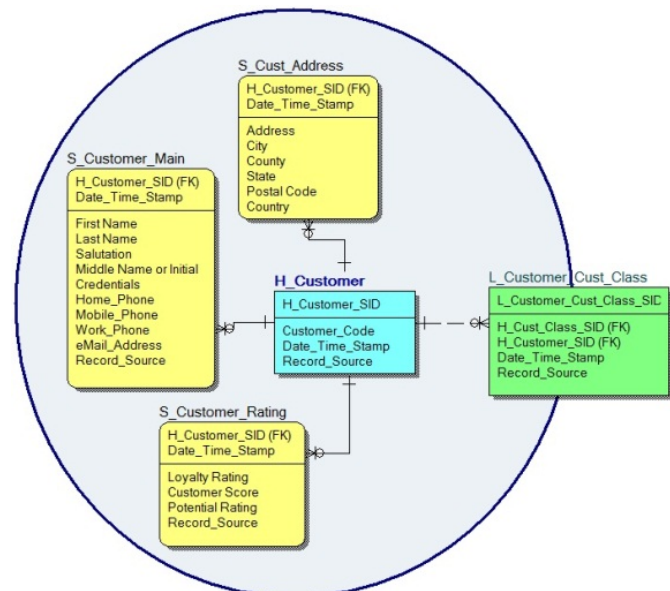
- 0830 Welcome & Introductions
- 0900 Data Warehouse Modeling
- 0930 Ensemble Modeling
- 1000 Data Vault Core Constructs
- 1020 Comparing Modeling Methods
- 1030 Break
- 1045 Tracking History
- 10:55 Information Modeling
- 11:15 Data Vault Modeling Process
- 1115 First Small Group Case Exercise
- 1200 Lunch
- 1300 Continue First Case
- 1345 Class Discussion & Groups Present
- 1415 Link Design & Exceptions
- 1430 SAL & HAL
- 1440 Business Key Topics
- 1500 Disconnected & Reference Tables
- 1515 Break
- 1530 Unit of Work
- 1600 Second Small Group Case Exercise
- 1700 Wrap up for the Day

Day Two

- 0830 Q&A from Day One
- 0915 Continue Second Case
- 1030 Break
- 1045 Class Discussion & Groups Present
- 1120 Satellite Design & Exceptions
- 1135 Expanded UOW & Keyed Instance
- 1150 Modeling Address
- 1200 Lunch
- 1300 Bike Shop Example
- 1320 Applying the DV Ensemble
- 1335 Standard and Expanded Attributes
- 1350 Managing Dates / Bi-temporal Data
- 1400 Third Small Group Case Exercise
- 1515 Break
- 1530 Continue Third Case
- 1545 Class Discussion & Groups Present
- 1620 Raw & BDV Layers
- 1630 Hyper Forms and Unstructured
- 1640 SID versus Hash
- 1650 Virtualization
- 1700 Wrap up for the Day

Day Three

- 0830 Q&A from Day Two
- 0900 Data Vault & Agility
- 0930 Data Vault & Big Data
- 1000 Architecture & Layers
- 1020 Helpful Tables: Bridge & PIT
- 1030 Break
- 1045 Loading Patterns
- 1130 Class Discussion
- 1145 Recap for Exam
- 1200 Lunch
- 1300 Recap & Discussions
- 1330 CDVDM EXAM
- 1630 Conclusion



Requirements and Pre-Requisites

This course does not require a computer or other device. Students should be prepared to take notes. All materials, work books, case books and exercises will be provided.

There are no pre-requisites for this course. It is helpful if you bring any specific topics that you are interested in concerning data vault. It can also be useful if you have the time for web research on the topic prior to class. Depending on the course section, the first day of class may be preceded by 2 weeks of online on-demand video lessons.

Registration and Fees

Please see GeneseeAcademy.com for Course Calendar, Registration and Pricing

Click here to [Register](#).

Contact Genesee Academy

For any other questions, please contact Genesee Academy

info@GeneseeAcademy.com

+1 303 526 0340 <http://twitter.com/geneseeacademy>

More Information on Data Vault



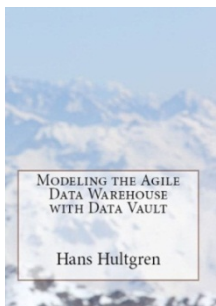
HansHultgren.WordPress.com



[Twitter.com/GeneseeAcademy](https://twitter.com/GeneseeAcademy)



[Linkedin.com/company/genesee-academy-llc](https://www.linkedin.com/company/genesee-academy-llc)



Book Available on Amazon:

“Modeling the Agile Data Warehouse with Data Vault”

DataVaultBook.BlogSpot.com

